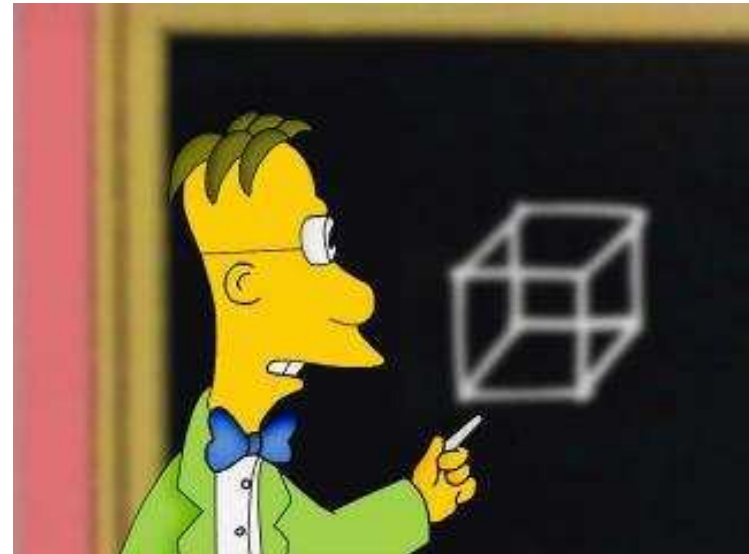


Probability

- Probability represents a **degree of belief** in some proposition
- Fuzzy logic represents a **degree of truth** (set membership)



Information versus Knowledge



$I_{HJS} \equiv$ A die with six sides.

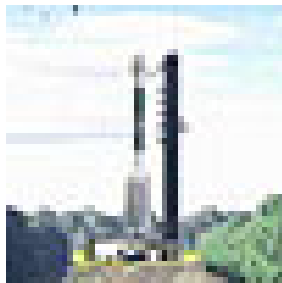
$I_{PJF} \equiv$ Exacting measurements reveal a balanced six-sided die.

$I_{HJS} \neq I_{PJF}$ **but** $P(A_i | I_{HJS}) = P(A_i | I_{PJF})$

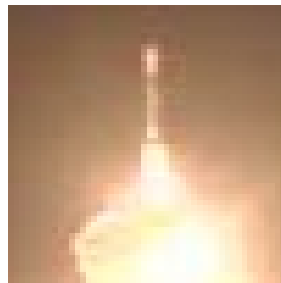
Mind in Motion

“I conceive the mind as a moving thing, and arguments as the motive forces driving it in one direction or the other

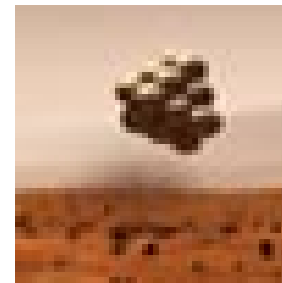
— John Craig (1699)



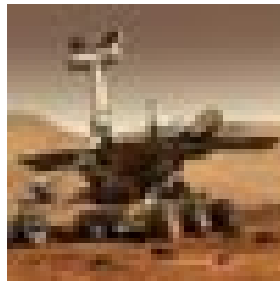
$$P(W | I)$$



$$P(W | S_1 \wedge I)$$



$$P(W | S_2 \wedge S_1 \wedge I)$$



$$P(W | S_3 \wedge S_2 \wedge S_1 \wedge I)$$